

Step by Step cleaning instructions cont.....

Placing safety signage, damp mop any mark or stain observed on the malls, make sure you wring your mop out as tightly as possible

Check every bin in your area regularly and empty if required referring to TASK CARD 11.

When attending any spillage (including hazardous waste), place signage, clean area thoroughly using appropriate equipment

When attending a spillage reported by control please ensure you report back when area is cleaned and safe

Using appropriate chemicals & cloth wipe all handrails

Brush railings clear of cobwebs and use dustpan & brush to sweep base of railings and ledge

Use the scraper to remove any gum (report any you are unable to remove)

Clean all fixtures and furniture, ie: benches, cycle hoops, ash trays etc referring to TASK CARD 14.

When cleaning any bodily fluids please ensure you use the hazardous waste kit on your trolley and refer to TASK CARD 23

At the end of your shift ensure your trolley is left clean and stocked ready for use for the following shift

WHAT GREAT LOOKS LIKE



TASK 10 MANUAL CLEANING OF MALLS

RAMS: Refer to relevant RAMS in folder in office

MSDS Sheets: Refer to COSHH folders located in office & all cleaning cupboards

Equipment Required for task – use relevant colour coded equipment

Safety signage x 2	Clear Bin Bags
Dustpan & Brush & Broom	Paper towels
Clean blue cloths	Scouring pad
Mop & Bucket	Floor scraper
Litter picker	Biohazard Kit

Chemicals required including dosing details

Multi-surface cleaner-Jontec 300	40 ml per litre water
Stainless steel cleaner	Taski Sprint 200
Disinfectant-Premiere Screen Virucidal	500ml of water to 20ml disinfectant 2.5lt of water to 100ml of disinfectant
Heavy Duty Spray Cleaner-Taski Sprint Spitfire	

Location of Cleaning Task

PPE required for task

Malls & Car Parks	Gloves
	Goggles for dilution
	Mask for dilution

Step by Step cleaning instructions



PLEASE WASH YOUR HANDS BEFORE YOU BEGIN YOUR TASK

Collect the relevant cleaning trolley for your designated area of work (upper/lower mall)

Ensure your trolley is fully stocked with the required, clean equipment

Walk your designated area in a methodical pattern, cleaning as you go, paying attention to corners, edges & ledges.

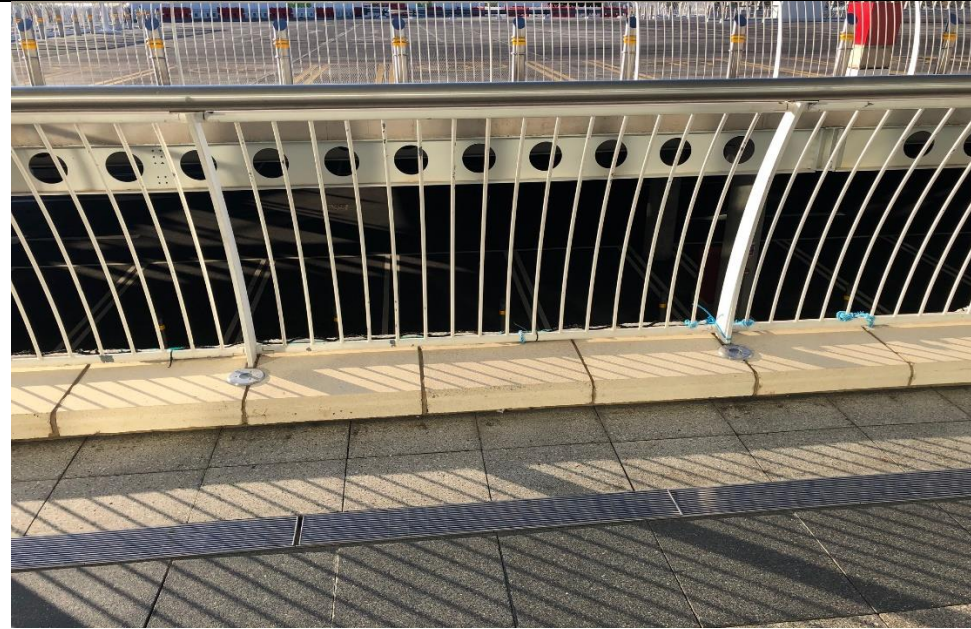
Use your litter picker to litter pick as you go, including stairwells, behind pillars and trolley bays

Use your broom or dustpan & brush to sweep up any debris, ensure focus on edges & corners

WHAT GREAT LOOKS LIKE



WHAT GREAT LOOKS LIKE



WHAT GREAT LOOKS LIKE



WHAT GREAT LOOKS LIKE



