

Step by Step cleaning instructions cont.....

With the machine still switched on press the red ignition button and the boiler will start to warm up, this will take about 3 minutes (you will see the red label on the exhaust change to the word HOT appearing in black letters)

Turn the fluid control dial to the required setting (for gum removal set between 2 – 3 may need small adjustments for different surfaces).

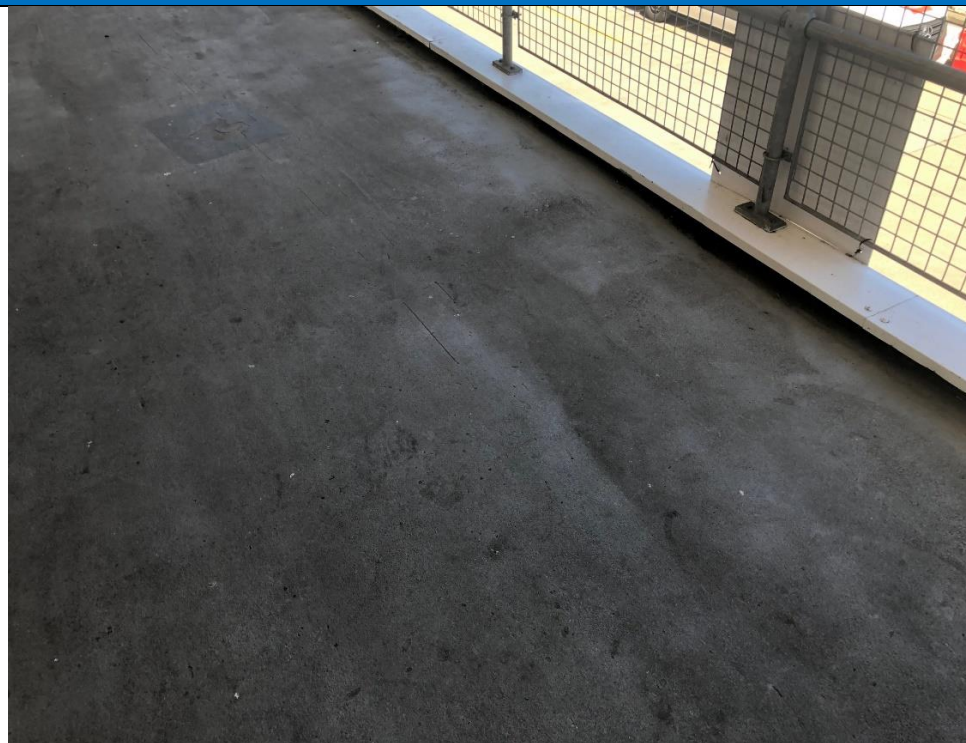
Take the lance in one hand and the deck scrubber in the other.

Test a small area first to make sure it does not damage the flooring / surface.

Rest the brush on the end of the lance onto the gum and wait 5 – 10 seconds, agitate the gum with the brush using circular motions until the gum disappears, with the deck scrubber brush across the area to determine if the gum has gone. If the gum remains repeat the process.

Follow instructions on FMS30K in RAMS folder when you have finished operating machine.

WHAT GREAT LOOKS LIKE



TASK 8 GUM REMOVAL USING ECOGUM MIDI MACHINE

RAMS: Refer to relevant RAMS in folder in office

MSDS Sheets: Refer to COSHH folders located in office & all cleaning cupboards

Equipment Required for task – use relevant colour coded equipment

Eco Gum Midi	Deck Scrubber
	Safety signage x 2

Chemicals required including dosing details

None required	
---------------	--

Location of Cleaning Task PPE required for task

Malls & Paved Areas	Disposable Gloves
	Goggles

Step by Step cleaning instructions



PLEASE WASH YOUR HANDS BEFORE YOU BEGIN YOUR TASK

Place safety signage around area to be cleaned

Only trained operatives to use this machinery

Place the Ecogum Midi on a flat level surface in a vertical position

Unzip the backpack, insert the detergent bottle into the large pocket and screw the cap on (making sure the tube is pushed as far down as it will go into the bottle).

Screw the LPG gas bottles hand tight on to the gas valve manifold and place into the circle pockets, securing the pipe with the Velcro to the backpack.

Turn the gas on by turning the gas valve clockwise.

Screw in the appropriate brush in the end of the nozzle on the lance.

Zip up the rucksack and screw in the handheld controller (making sure the pins are properly aligned).

Pick up the rucksack and place onto your back adjusting the straps to fit accordingly

Using the handheld controller, turn the machine on and adjust the fluid control dial to 10, let the machine pump the detergent around the system. When the detergent starts to come out the end of the lance turn the fluid control dial down to 0

