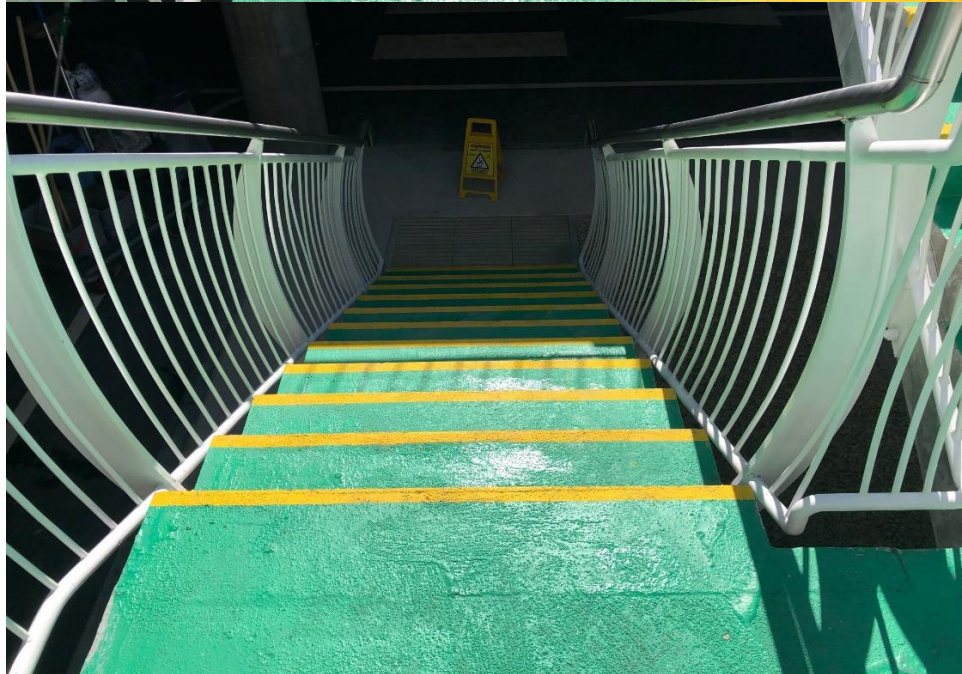
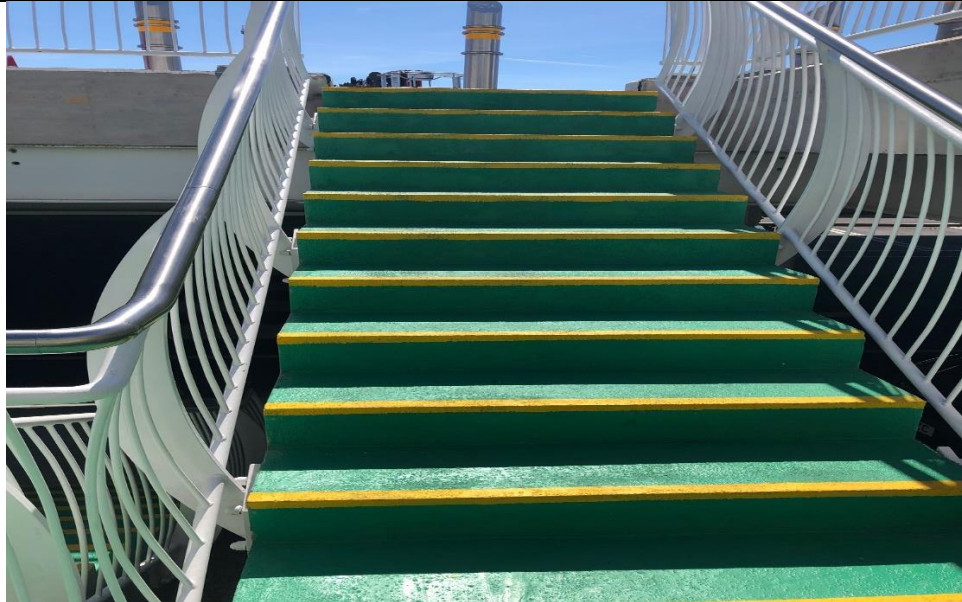


WHAT GREAT LOOKS LIKE



TASK 9 PRESSURE WASHING

RAMS: Refer to relevant RAMS in folder in office

MSDS Sheets: Refer to COSHH folders located in office & all cleaning cupboards

Equipment Required for task – use relevant colour coded equipment

Pressure Washer	Safety signage x 2

Chemicals required including dosing details

None required

Location of Cleaning Task PPE required for task

Site specific	Wellingtons
	Waterproof clothing
	Goggles

Step by Step Cleaning instructions



PLEASE WASH YOUR HANDS BEFORE YOU BEGIN YOUR TASK

- Only trained operatives to use this equipment
- Arrange for pressure washer to be taken to area to be cleaned.
- Cordon off the area you are going to clean with safety signage allowing for overspray
- Check there is adequate drainage nearby to handle the discarded water.
- Set temperature required if appropriate.
- Start the engine by the key switch following operating instructions.
- Once engine is running and area safe, squeeze trigger to begin pressure washing.
- Take great caution as the water pressure is very high and has potential to cause damage or injury.
- Work in a methodical manner, adjusting the pressure to the minimum to achieve the desired result.
- Upon completion of pressure washing leave the signage and cordon in place until area is dry and safe
- Arrange for the pressure washer to be returned to storage area